

72-73  
H.S. FRESH

# Take Me Along

*Sketch Trip Diary*

**bp**

Bienfang Paper Co., Inc.  
Metuchen, New Jersey

*No. 601-SD / Light Weight / All Purpose Drawing Paper / 100 Sheets  
Size: 8 1/2" x 11"*

MICHAEL  
BOHACZ

MIKE  
BOHACZ

Hour 4

Take  
Me  
Along  
Sketch Trip Diary

bp

Blending Paper Co., Inc.  
Metuchen, New Jersey

No. 601-2D / Light Weight / All Purpose Drawing Paper / 100 Sheets  
Size: 8 1/2" x 11"

## Ronald Mounce, Senior at ISU hangs his paintings.



Getting his senior invitational exhibit set up Saturday was no easy job, even with the help of ISU faculty members, Ronald Mounce found. At this stage he had larger paintings, like the three in background, hung, with smaller paintings still to go.—(Pantagraph Photo)

### INVITATIONAL EXHIBIT

# Towandan Showing Art Work at ISU

A senior invitational painting exhibit by Ronald Mounce, a senior in the Illinois State University Art Department, opened Saturday in the Centennial East Art Gallery.

The exhibit will be open to the public through June 30.

Mr. Mounce, who will be graduated at the June commencement, will be a graduate assistant in the ISU Art Depart-

ment next year while he works on his master's degree. He is a native of Towanda who attended Normal Community High School.

Mr. Mounce has exhibited his paintings in Bloomington-Normal and is represented in the ISU student permanent collection.

His exhibit consists of about 29 pieces, nearly all oil paintings with a few drawings.

Pantagraph, Bloomington, Ill.,

Sunday, June 6, 1965.



d d d d d  
Drawing on 18" by 24" paper. 3" margin.

Steps to do:

1. Draw room interior

- a. 2 doorways
- b. 2 windows
- c. Ceiling
- d. Floor
- e. Walls

AREA TO WORK 12" x 18"

7" UP HORIZON LINE

VANISHING POINT IN CENTER

area of tiles must be included.

2. Bring in photographs and arrange in rooms.

COLOR

REFLECTION OF LIGHT

OFF OF SURFACES

PRIMARY SOURCE OF LIGHT - SUN (WHITE LIGHT)

WHITE LIGHT - PRESENCE OF ALL COLORS.

PRIMARY COLORS - 3

R - Y - B CAN'T BE MIXED

SECONDARY COLORS (MIXTURE OF 2 PRIMARIES)  
O - G - P  
3

TERTIARY - 6

MIXTURE OF 1 PRIMARY AND ONE SECONDARY

COLOR — 12

- RO
- BG
- RP
- YO
- BP
- YG



CONTINUED →

CONTINUED

RED ADD BLACK  
COMPLEMENTARY

EXACTLY ACROSS ON  
COLOR WHEEL

ADD WHITE-TINT  
BLACK-SHADING

BLACK-ABSENCE OF ALL COLOR AND/OR ALL LIGHT.

HARMONY-COLORS THAT GO WELL TOGETHER.

R RP P BP

4 colors adjoining

CHROMATIC

ANALAGOUS

MONO-CHROMATIC  
COLOR

HARMONY-SHADE AND TINT.

TRIAD-3 COLORS THAT FORM A PERFECT TRIANGLE ON  
THE COLOR WHEEL.

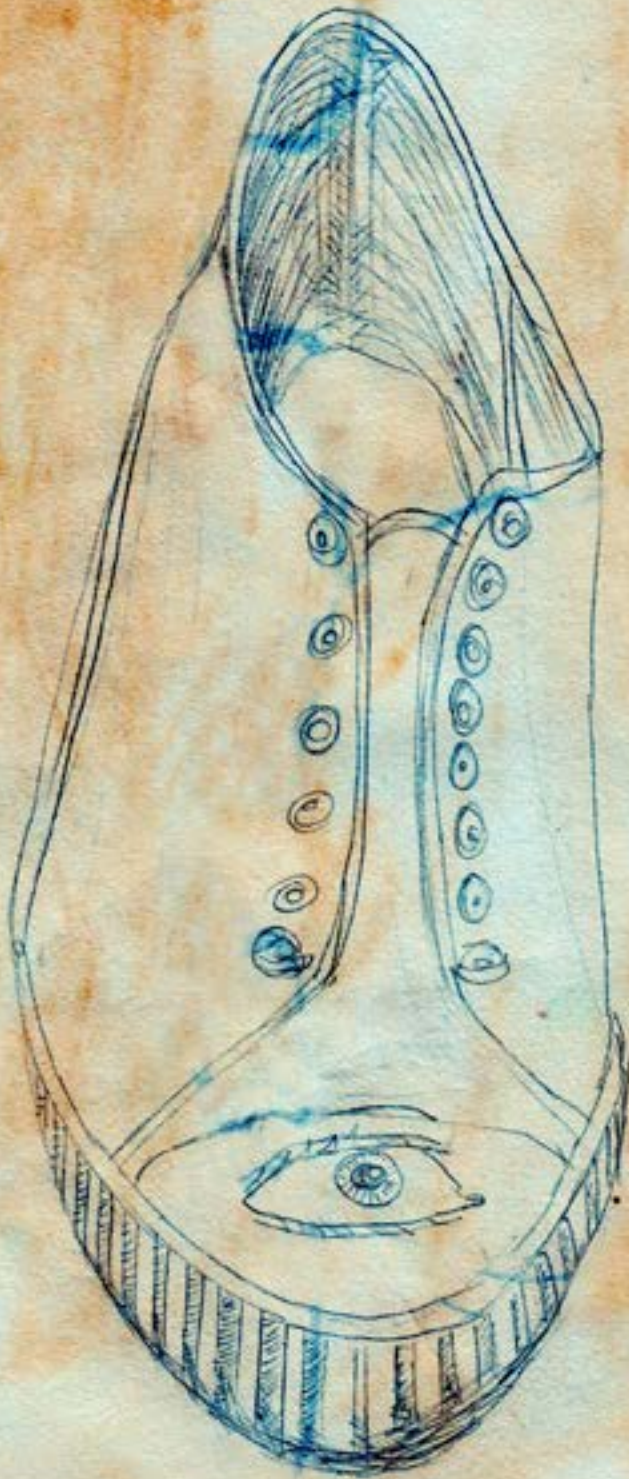
COMPLIMENTARY

- ① SHADING
- ② NEUTRAL
- ③ CONTRAST



- ① DESIGN FOR AN OBJECT
- ② MAKE ROUGH SKETCH IN SB.
- ③ WHITE PAPER SAME SIZE AS DESIGN.  
EXACT DESIGN ON THE PAPER.
- ④ PAINT OBJECT WHITE - WITH GESSO
- ⑤ TRANSFER DESIGN TO OBJECT

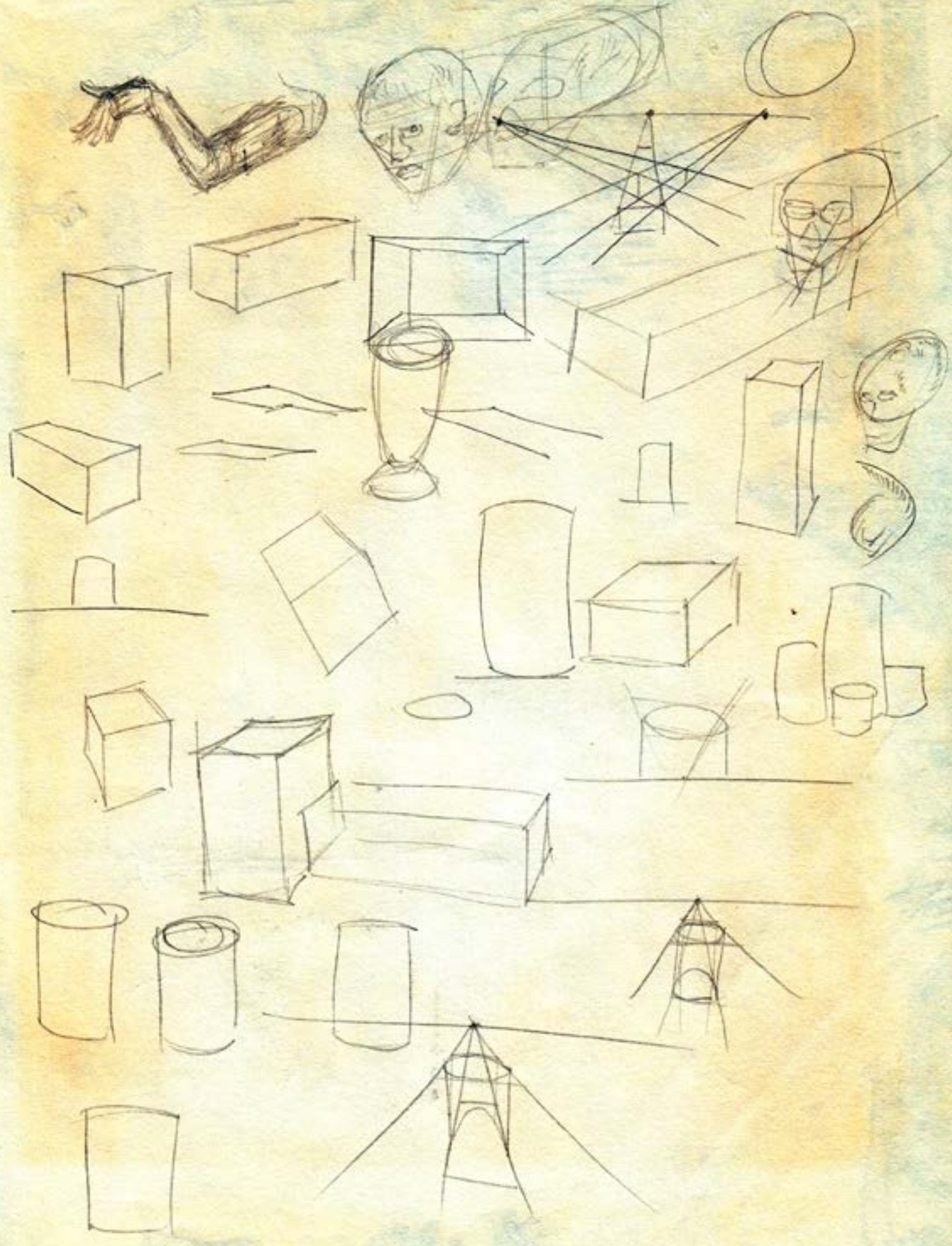


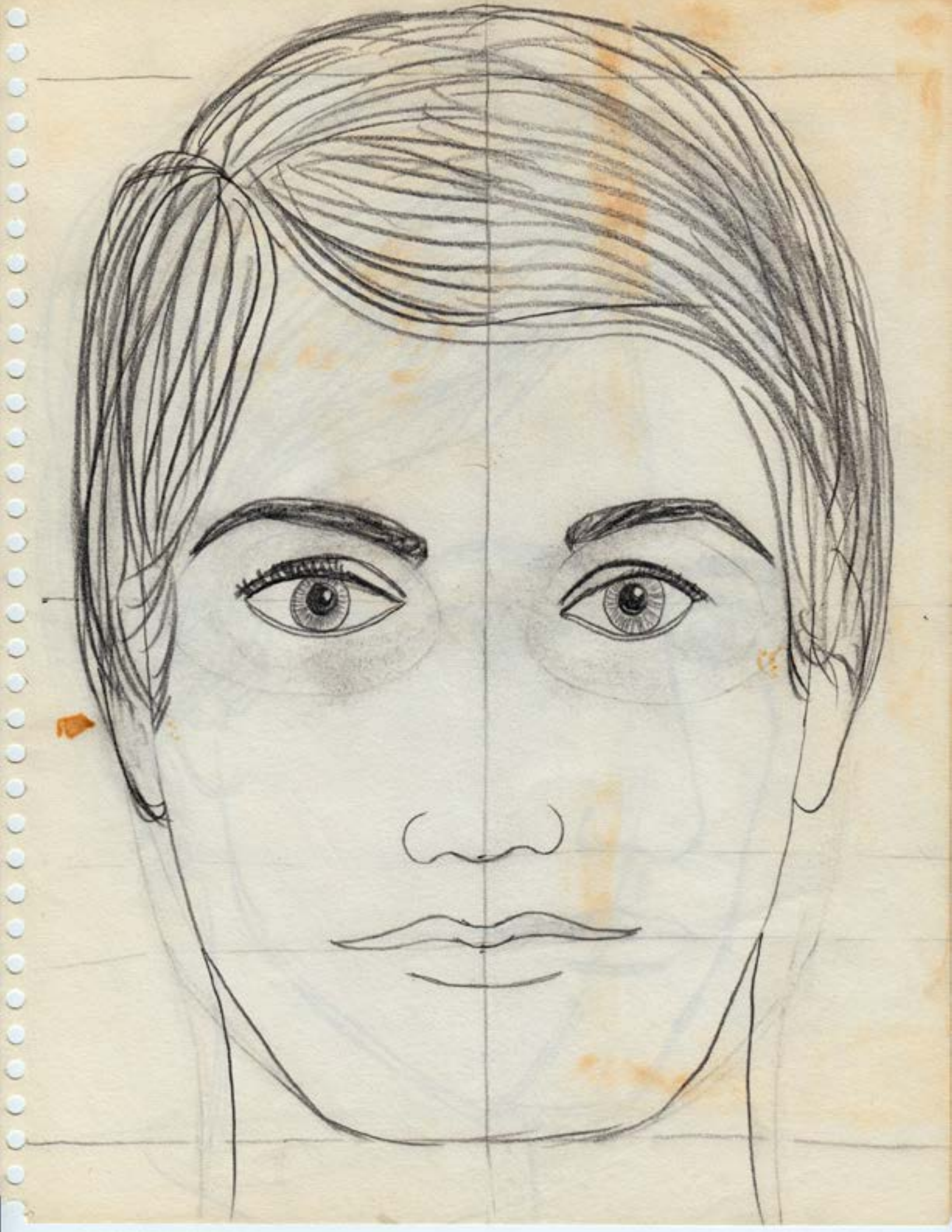


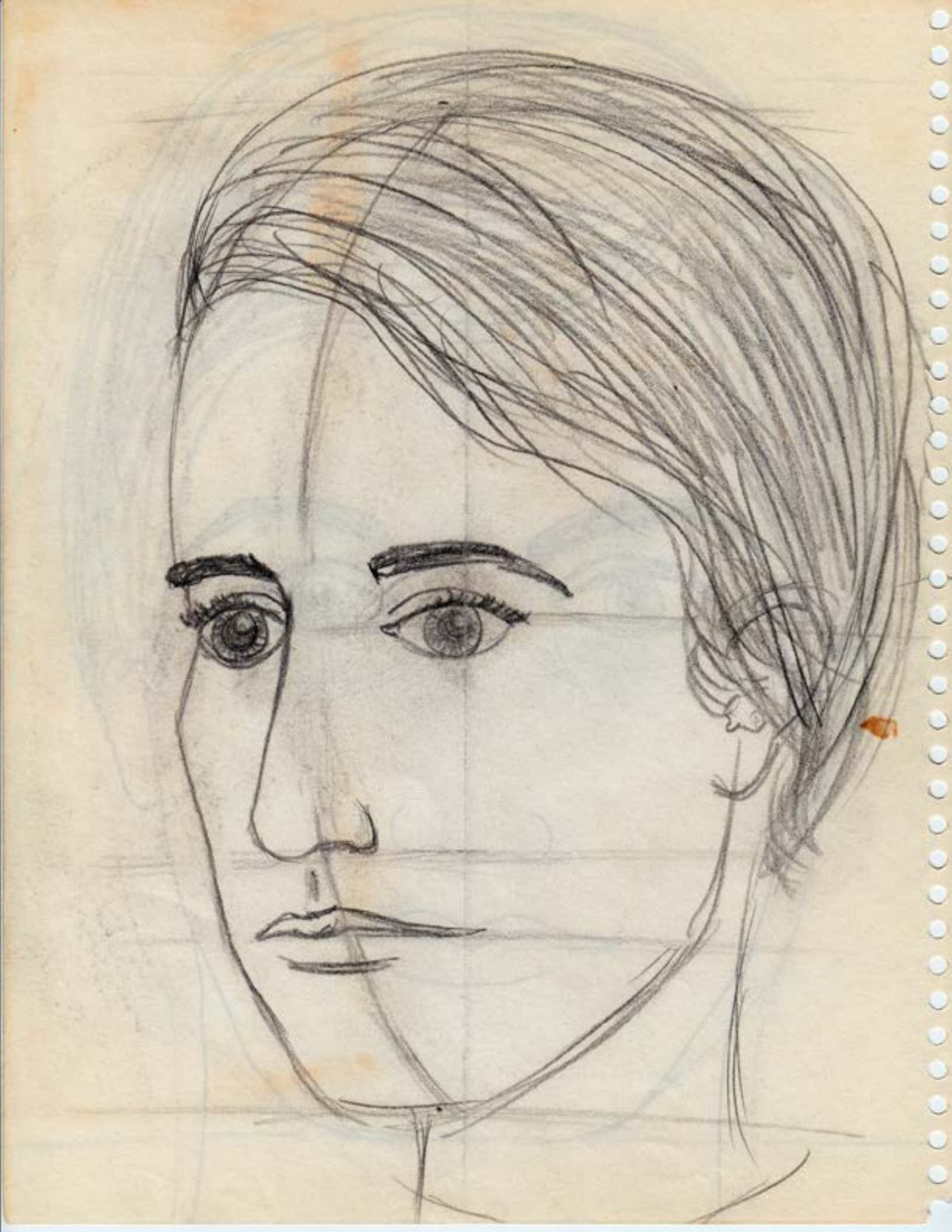
A

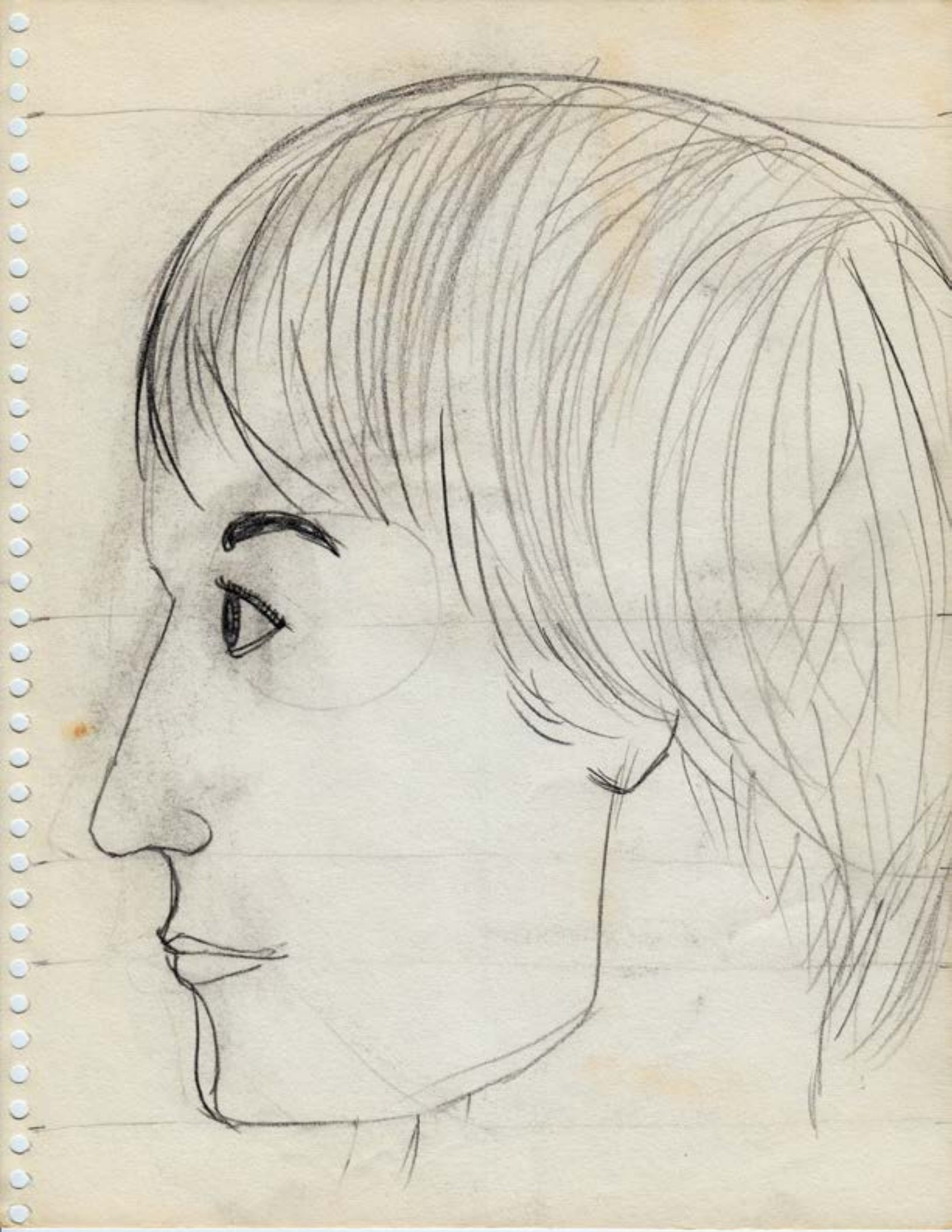












1. SEURET  
IMPRESSIONISM  
HATE IT

2. HOPPER  
AMERICAN REALIST  
HATE IT

3. RENWIR  
IMPRESSIONISM  
HATE IT

4. EL GRECCO  
LOVE IT

5. MONET  
IMPRESSIONISM  
HATE IT

6. MONET  
IMPRESSIONISM  
LOVE IT

7. HOPPER  
AMERICAN REALIST  
I DISLIKE THE ANCIENT LOOK

8. DALI  
SURREALISM  
LOVE IT

9. LICHTENSTEIN  
POP ART  
HATE IT

10. DA VINCI  
~~RENAISSANCE~~  
LOVE IT

11. DICHIRICH  
SURREALISM  
LOVE IT

12. VAN GOGH  
IMPRESSIONISM  
LOVE IT

13. VAN GOGH  
SELF PORTRAIT  
LOVE IT

14. TANGUY  
SURREALISM  
LOVE IT

15. RILEY  
OP ART  
LOVE IT

16. DICHIRICH  
SURREALISM  
LOVE IT

17. REMBRANDT  
ABSTRACT  
LOVE THE PSYCHOLOGY

18. RILEY  
OP ART  
LOVE IT

19. TANGUY  
SURREALISM  
LOVE IT

20. TANGUY  
SURREALISM  
LOVE IT

21. MICHAELANGELO  
~~RENAISSANCE~~  
LOVE IT



# POSTER - HIRE THE HANDICAPPED

50 - APPEAL - LOOK GOOD

KEEP IT SIMPLE

25 - ORIGINALITY -

15 - ARTISTIC ARRANGEMENT

10 - NEATNESS -

22" x 28"

"HIRE THE HANDICAPPED"

must be <sup>↑</sup> something



HIRE THE  
HANDICAPPED



THEY NEED  
WORK NOT  
MONEY







not  
UNIVERSE  
no  
without

WHEELS  
EELS  
TION

WON'T

FRISON

TION  
TION  
TION  
TION



THE ONLY TRULY  
HANDICAPPED  
ARE THOSE  
WHO DON'T THINK

DO YOU? HIRE THE  
HANDICAPPED



HIRE THE  
HANDICAPPED

HAVE A  
HEART

The

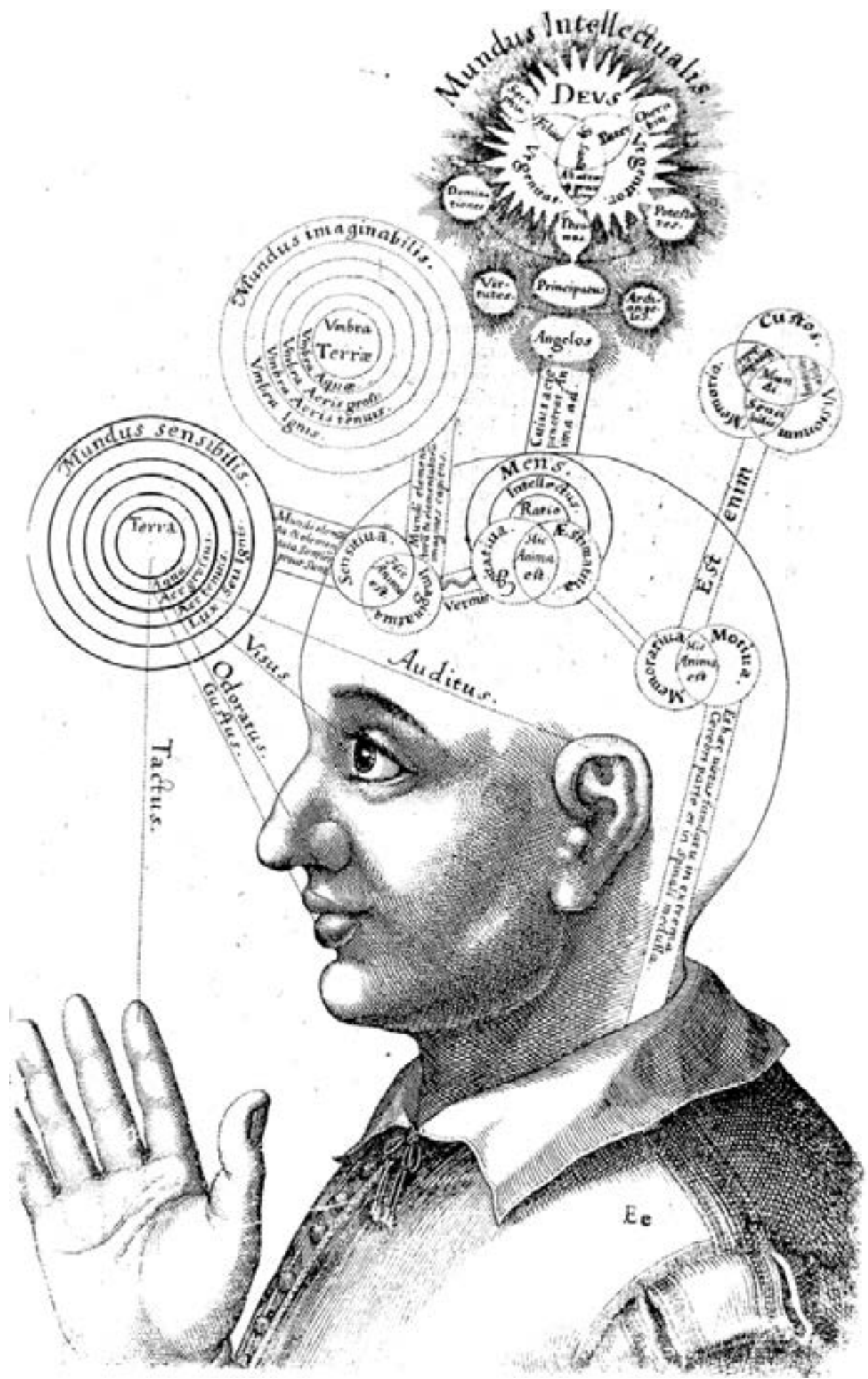


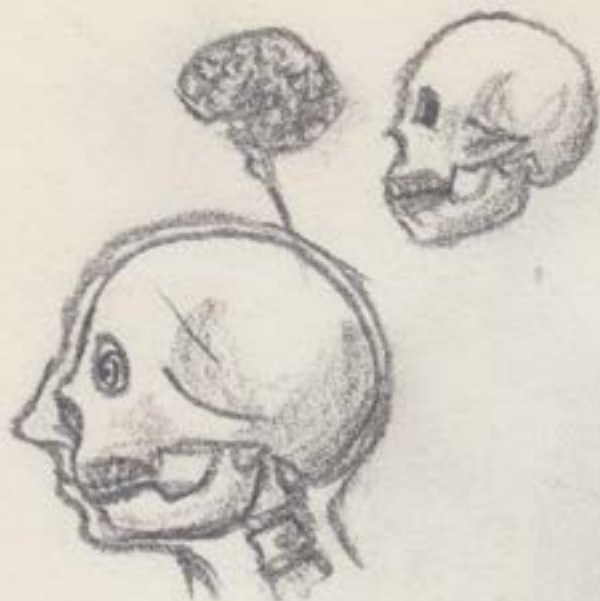
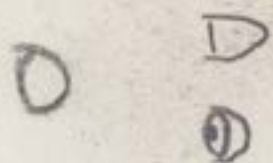
The only truly  
handicapped are  
those who don't  
think.



Do You? HIRE THE  
HANDICAPPED













# PHENOLOGY

intuition

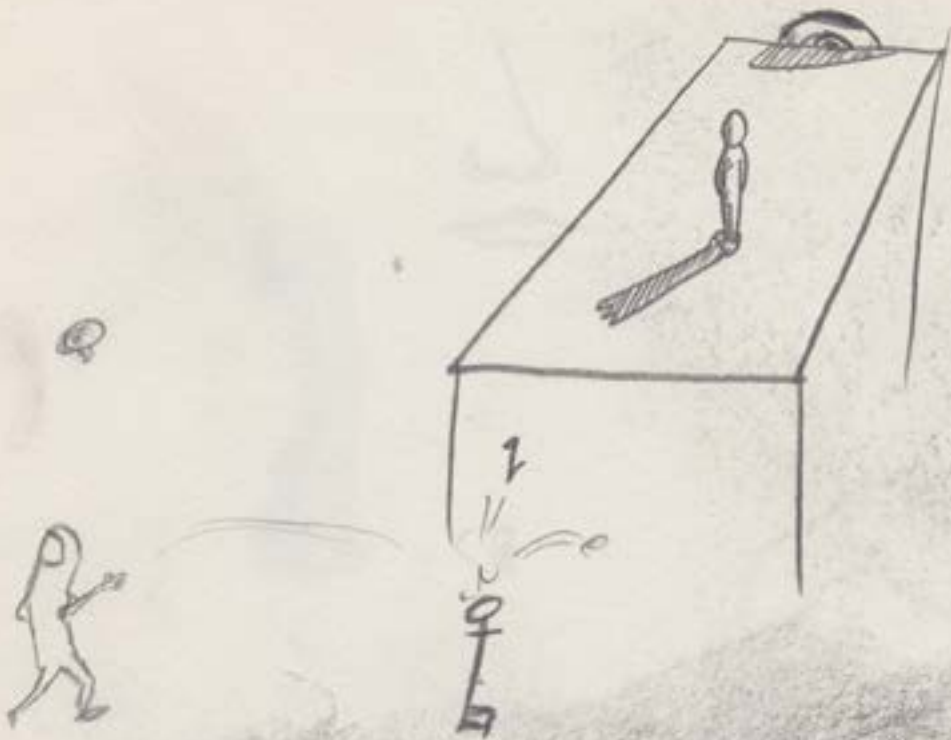
intelligence

memory

sight







ግንዛቤ

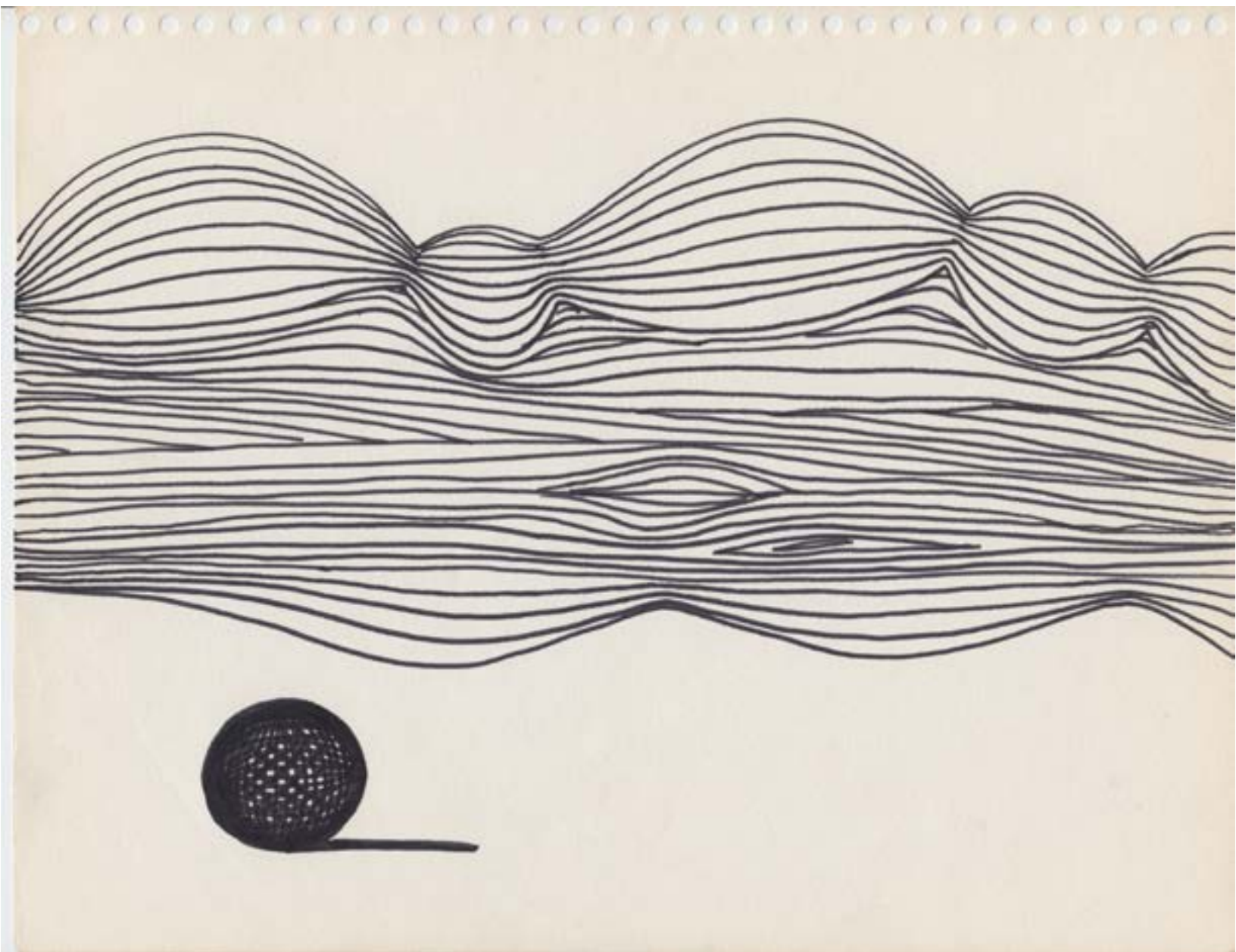


ግንዛቤ ግንዛቤ  
ግንዛቤ

ግንዛቤ



ግንዛቤ



~~ABCDEFGHIJKLMNOPQRSTUVWXYZ~~

~~ABCDEFGHIJKLMNOPQRSTUVWXYZ~~

ABCDEFGHIJKLMNOPQRSTUVWXYZ



A B C D E F G H I J K L M N O P R S SH  
\$ TH X V W Z

UO O  
UO O

□

□ U

□

□ U L L Γ  
□ U L L Γ  
□ U L L Γ  
□ U L L Γ  
□ U L L Γ

~~ABCDEFGHIJKLMNOPQRSTUVWXYZ  
□ U L L Γ Π T J W E F A F E  
S SH U T TH V W Z  
J W L E F E~~

